

ANALYTICAL SALES
AND SERVICE

Product and Services



ANALYTICAL SALES
AND SERVICE

Call Now for Quote: 409-724-2303

✉ sales@analyticalsalesservice.net
🌐 analyticalsalesservice.net

📍 412 N. Memorial Hwy
Nederland, TX 77627

Product Line Sheet



PRODUCTS

Analytical, instrumentation and electrical products that deliver safety and production control.



ASSEMBLIES

Customized solutions created to your exact specification and need.



SERVICES

Comprehensive customer care designed to increase MTBF, lower MRO costs and keep production online.

Who is Analytical Sales & Service?

A leader in enabling safety, environmental and reliability success through instrumentation, electrical and analytical components.

The leading distribution partner and supplier of instrumentation, electrical supplies and analytical components for high-performance containment, protection, metering and monitoring of fluids and gases.

The Benefits of Working with Us!

- Enable your safety, environmental and reliability success
- Improved your production availability
- Maximize your product delivery and cost control
- Resolve your supply chain challenges



**ANALYTICAL SALES
AND SERVICE**

Explore Now! 409-724-2303

✉ sales@analyticalsalesservice.net

🌐 analyticalsalesservice.net

📍 412 N. Memorial Hwy
Nederland, TX 77627



INSTRUMENTATION

APEX INSTRUMENTS
AND EQUIPMENT



Assemblies
Chromatograph Columns
Sample Conditioning Equipment
pH Buffers
Stainless Steel Braided Hoses
Conductivity Standards
Analyzer Transmitters & Controls

ASHCROFT®
Trust the shield.®

Pressure Gauges
Thermometers
Diaphragm Seals
Test Equipment
Pressure Gauge Repairs
Pressure Switches
Pressure Transmitters
Pressure Transducers
Temperature Switches

ALTA ROBBINS

Precision Instrument Valves
Versatile Metering Valves
Miniature Shutoff Valves
Rupture Discs
Pressure Relief Valves
All-Inert-Seal Valves
Special Coatings:
SILCONERT2000/Sulfiner



Pressure Relief Valves
Back-Pressure Regulators

CRANE

GO REGULATOR

Line Filters
Assemblies
Diaphragm Seal Valves



Pressure Meters
Flow Meters
Temperature Levels Meters



Sight Glasses
Liquid Level Gauges
Magnetic Level Gauges
Flow Meters
Sight Flow Indicators
Glass & Gaskets
Ejectors & Eductors



Orifice Plates
Flanged Unions
Meter Runs
Flow Nozzles
Condensate Chambers
Straightening Valves
Venture Tubes



Tube Fittings
Instrument Valves
Hand Valves
Gauge Valves
DBB Valves
Manifolds
Flanges, Flange Adaptors
Monoflanges



Large Display Process Meters
Large Display Temperature Meters
Digital Panel Meters
Panel Mount Loop-Powered Meters
Nema 4x Loop-Powered Meters
Scanners
Annunciators



Channel Track Products
Instrument Pipe Stands
Punched Angle & Channel
Unistrut Support Systems
Cable Trays
Instrument Tubing Trays
Condensate Pots



Thermocouples & RTDs,
Replacement, Sensors, Industrial
Assemblies, Connection Heads,
Terminal Blocks and Extensions,
Thermowells, General Purpose
Sensors, Multiple Sensor Assemblies,
Transmitters



**WESTERN
ENTERPRISES**
a Scott Fetzer company

CGA Nuts & Nipples for Bottled Gasses,
Single & Dual Stage Regulators, Medical
Grade Pressure Regulators, Multiple
Fitting Options, Assemblies



**ANALYTICAL SALES
AND SERVICE**

Explore Now! 409-724-2303

✉ sales@analyticalsalesservice.net

🌐 analyticalsalesservice.net

📍 412 N. Memorial Hwy
Nederland, TX 77627

INSTRUMENTATION



ANDERSON
GREENWOOD



BAND-IT®

FLUKE®

GENERAL VALVE®
TWIN SEAL™

HF **HeadlineFilters**

HEX VALVE



VICI

WILCO
SUPPLY, L.L.C.

ELECTRICAL

ABB

Atkore™
AFC Cable
Systems

Atkore™
Allied Tube
& Conduit

AMPROBE®
A Fluke Brand

B-Line
by **EAT·N**

BELDEN

BRADY

BRK®
THE PROFESSIONAL STANDARD

BURNDY®

EAT·N
Bussmann

Carlton®

Cooper Lighting
by **EAT·N**

CRC

EAT·N
Cutler-Hammer

Crouse-Hinds
by **EAT·N**

DEWALT



EAT·N

General Cable

GLOBE STRUT®

GREENLEE

HPS
Hammond
Power Solutions

HITACHI
Inspire the Next



ANALYTICAL SALES
AND SERVICE

Explore Now! 409-724-2303

✉ sales@analyticalsalesservice.net

🌐 analyticalsalesservice.net

📍 412 N. Memorial Hwy
Nederland, TX 77627



ELECTRICAL

Honeywell



Lumark



Metalux



Plasti-Bond



RAB



RIDGID



Unistrut



ANALYTICAL SALES AND SERVICE

Explore Now! 409-724-2303

✉ sales@analyticalsalesservice.net

🌐 analyticalsalesservice.net

📍 412 N. Memorial Hwy
Nederland, TX 77627



MANUFACTURER LIST

ACROSWITCH
 AGASTAT TIMERS
 AIRPAX METERS ALLEN-BRADLEY
 CONTROLS AMETEK (US GAUGES)
 AMPROBE METERS ANALOGIC
 INSTRUMENTATION API
 INSTRUMENTATION
 ASCO SOLENOID VALVES ASHCROFT
 GAUGES
 ATC
 AUBURN
 AURORA

BACHARACH INSTRUMENTATION
 BAILEY CONTROLS
 BANNER
 BARBER-COLMAN CONTROLS
 BARKSDALE SWITCHES
 BARTON (ITT)
 BECKMAN INSTRUMENTATION
 BEEDE METERS
 BELL & GOSSETT PUMPS
 BELLOFRAM
 BIDDLE INSTRUMENTATION
 BRAUKMANN
 BRISTOL INSTRUMENTATION
 BROOKS FLOW INSTRUMENTATION
 BURNS
 BW CONTROLS LEVEL CONTROLS

UNIVERSAL INSTRUMENT CORP.
 INSTRUMENTATION
 UNIVERSAL INSTRUMENT CORP.
 SOLENOID VALVES
 UNIVERSAL INSTRUMENT CORP.
 INDUSTRIAL HEATING PROD
 CASH-ACME
 CASHCO CONTROL VALVES
 CHART PAPER ALL MANUFACTURERS
 CHROMALOX HEATING PRODUCTS
 CLEVELAND CONTROLS
 CONOFLOW
 COX INSTR.FLOW INSTRUMENTATION
 CRANE

DANFOSS VALVES
 DANIEL
 DEVILBISS
 DEWEY
 DUNHAM BUSH STEAM SPEC. DURANT
 COUNTERS
 DWYER INSTRUMENTATION

EAGLE TIMERS
 ECKARDT
 ECLIPSE
 EMCO
 ERIE
 ESTERLINE-ANGUS CONTROLS

FAIRCHILD
 FAST HEAT HEATING PROD. FENWAL
 CONTROLS FIREYE-COMBUSTION CNTRLS
 FISCHER & PORTER INSTR. FISHER
 FLUKE METERS
 FOXBORO

GEMCO SWITCHES
 GENERAL CNTRLS (SOLENOID & COMBUSTION
 VALVES) GENERAL ELECTRIC METERS W.
 W.GRAINGER
 GREAT LAKES GRUNDFOS

HAGEN (WESTINGHOUSE) HAYS
 HECON COUNTERS
 HOFFMAN STEAM SPEC.
 HONEYWELL CONTROLS &
 INSTRUMENTATION

ITT GENERAL CTRLS (SOLENOID COMBUSTION
 VLVS) INDEECO
 INGERSOLL RAND

JAMES BURY
 JANKAR
 JENKINS
 JEWELL CONTROLS
 JOHNSON CONTROLS
 JORDAN

KENT INSTRUMENTATION
 KIELEY & MUELLER
 KUNKEL
 LANCER SOLENOID VALVES
 LANDIS & GYR
 LAWLER STEAM SPECIALTIES
 LEEDS & NORTHROP INSTRUMENTATION LFE
 METERS
 LOVE
 LOYOLA HEATING PRODUCTS
 LUKENHEIMER

MAGNETROL SOLENOID VALVES
 MAGNETROL LEVEL & FLOW INSTRUMENT
 MAMAC TRANSMITTERS
 MARSH GAUGES
 MARSHALLTOWN GAUGES
 MASONE!LAN
 MAXITROL CONTROLS
 MAXON COMBUSTION CONTROLS
 MCC POWERS CONTROLS
 MCDONNELL & MILLER CONTROLS
 MERCROID SWITCHES
 MICROSWITCH SWITCHES
 MOORE

NEPTUNE METERS
 NEWPORT METERS
 NORGREN
 NORTH AMERICAN

OGDEN HEATING PRODUCTS
 OMEGA SENSOR & CONTROLS

PARAGON TIMERS
 PART LOW CONTROLS PENN(BASO)
 CONTROLS
 PHOTOS WITCH PHOTO/ELEC.CTLS POTTER
 BRUMFIELD
 PROTECTION CONTROLS

QUINCY

RBM
 REDINGTON COUNTERS
 RED LION
 RESEARCH INC CONTROLS ROBERTSHAW
 CONTROLS
 ROCKWELL METERS
 ROSEMOUNT
 RUSTRAK RECORDERS
 SARCO STEAM SPECIALTIES SIGNET
 SIMPSON METERS
 SKINNER SOLENOID VALVES SOLTEC
 SOLENOID VALVES SPENCE STEAM
 SPECIALTIES

SQUARE D RELAYS & TIMERS
 TACO PUMPS
 TAYLOR INSTRUMENTATION
 TEL-TRU GAUGES
 THERMOCOUPLES ALL MANUF.
 TOKHEIM



**ANALYTICAL SALES
 AND SERVICE**

Explore Now! 409-724-2303

✉ sales@analyticalsalesservice.net
 🌐 analyticalsalesservice.net

📍 412 N. Memorial Hwy
 Nederland, TX 77627



GENERAL PRODUCT BRANDS

TRACOR-WESTRONICS TRERICE
GAUGES & THERMOM. TRIPLETT
METERS

UNILOCK
UNITED ELECTRIC CONTROLS US
GAUGES (AMETEK)

VEEDER-ROOT COUNTERS VIATRAN
TRANSMITTERS VULCAN ELECTRIC

WARREN ELECTRIC
WARRICK CONTROLS WATLOW HEATING
WATSON MCDANIEL STEAM
WATTS REGULATORS

WEKSLER GAUGES
WELLMAN
WEST
WESTON CONTROLS
WHITE-RODGERS CONTROLS
WILKERSON

YEW INSTRUMENTATION



MOTORS, PNEUMATIC VALVE OPERATORS, THERMOSTATS AND THERMOCOUPLES

AMERICAN MTR AMERICAN STERILIZER
AMETEK
AMPROBE
AMSCO
ANDERSON BACHARACH
BADGER METER BAILEY METER
BARBER-COLEMAN BECKMAN
BENDIX
BRISTOL
BROWN
BRUSH
BIF
CALIBRATED CAMBRIDGE
CANNON
CAPITOL
CHESELL
CHINO
CLEVELAND

COLE PARMER CONSOLIDATED CUTLER
HAMMER CROSBY
EKG
ESTERLINE ANGUS
FISHER & PORTER FOXBORO
GENERAL ELECTRIC GOULD
GOULTON INDUSTRIES GRAPHIC
HAGAN
HAYS REPUBLIC HEWLETT-PACKARD
HONEYWELL
HOPPLE
HOUSTON
ITT BARTON
KAYE
KENT

KODAK
L&N
LINEAR MARSHALLTOWN(MOTOCO)
MASONEILAN
MOLYTEK
MOORE
MOTOROLA
PERKIN-EIMER
ALMER MUELLER PENN METER POWERS
PARTLOW REPUBLIC ROCKWELL
ROBERTSHAW RUSTRAK SPARLING TAYLOR
TEXAS INSTR TOSHIBA TRACOR TRERICE
UNITED ELEC WEKSLER WESTINGHSE
WESTRONICS YOKOGAWA
YEW



WE REPAIR THOUSANDS OF ITEMS, FROM HUNDREDS OF MANUFACTURERS. CALL FOR PRICING

BURNER CONTROL

FLAME SAFEGUARD HONEYWELL
FIREYE
CLEAVER BROOKS

CHART RECORDER

PARTLOW
HONEYWELL
L&N
FOXBORO
CHESSEL



**ANALYTICAL SALES
AND SERVICE**

Explore Now! 409-724-2303

✉ sales@analyticalsaleservice.net

🌐 analyticalsaleservice.net

📍 412 N. Memorial Hwy
Nederland, TX 77627

Pressure & Temperature Control

ASHCROFT
Trust the shield.®



KEEP CRITICAL EQUIPMENT AND PROCESSES UP AND RUNNING

PRESSURE

Reliable and accurate pressure measurement and control for nearly any application, environment, or budget.

- Pressure Gauges
- Differential Pressure Gauges
- Diaphragm Seal Gauges
- Pressure Switches
- Siphons, Snubbers, Dampeners
- Indicating Transducers
- Maximum Indicating Pointers
- HF Acid Leak Detection Gauges
- Watertight & Explosion Proof Options
- High-Temp and Corrosive Service
- 0-100,000 PSI Options

TEMPERATURE

Accurate and easy-to-read temperature measurement for just about any temperature range and application.

- Temperature Gauges
- Temperature Switches
- Multi-point Temperature Sensors
- Dual Sensor Thermometers
- Gas Actuated Thermometers
- Thermocouples/RTDs
- Thermowells
- Duratemp Thermometers
- Various Temperature Range Options
- 2", 3" or 5" Dial Options for Easy Readability
- +/- 1% Accuracy to ASME B40.3 Standard

SERVICES

Calibration and certification services to the most stringent standards for consistent operational performance.

- Accredited Calibration Services
- Annual Certification Services

OTHER SERVICES—

- Fully Insured Custom Fabrication
- Rental Tools

INVENTORY SERVICES—

- On-site VMI and Consignment
- Off-site Inventory Mirroring

Largest Available, On-hand Inventory in the Golden Triangle!

The most focused, nimble, easy-to-work with, local, and family-owned business that delivers the most trusted pressure and temperature products and solutions designed to maximize your production performance, safety, and control.



Explore Now! 409-724-2303

✉ sales@analyticalsalesservice.net

🌐 analyticalsalesservice.net

📍 412 N. Memorial Hwy
Nederland, TX 77627

Fill Cart Assemblies



PROTECTING SEAL AND UNIT PERFORMANCE

EASY TO USE

Keep unit production optimal with easy refilling of pressurized seal reservoirs and barrier fluid systems.

OPTIMAL SEAL & UNIT

Ensuring optimal seal and pump performance through properly filled barrier fluid systems.

SAFE

No unwanted liquid releases and operator safety through our integrated check valve capabilities.

Why Our Fill Carts?

- We offer repairs and preventative maintenance programs.
- Our fill carts are safer and more reliable.
- We provide easy-to-use and effective lubricant and liquid handling, saving you thousands per year in maintenance-related cost due to failure or operator error.
- You keep your operating environment operating at its best by keeping seals and barrier fluids topped up, clean, and doing their job as designed.
- Our fill carts stand out for their performance, reliability, and cost effectiveness as compared to other options.
- Our **no-flat tires** mean you never have an “uh, oh moment”.
- Ours are simply the best!

The Benefits of Our Fill Carts!

- Locally built, repaired, and local parts inventory
- Annual Preventative Maintenance Options
- Annual Inspection and/or Certifications available
- 30 and 60 gallon tank or 55-gallon drum supply reservoir options
- Inject new fluids at pressures from 50 to 1500 psi
- Rugged construction, a steel wagon with **no-flat tires**
- Reliable mechanical hand pumps, single or dual options
- Multiple check valves installed for operator safety
- Available with keyed quick connects prevent operator error
- Retractable hose reels for hose management and maintenance
- Multiple barrier fluid and medias (ex. DuraClear, Crystal 7)
- Deluxe model has grease fittings on every wheel
- Pivoting back wheels make for easy maneuvering
- Strong handles that stand up to severe and harsh use
- 24/7 troubleshooting options
- We repair existing carts, too!



ANALYTICAL SALES
AND SERVICE

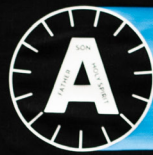
Explore Now! 409-724-2303

✉ sales@analyticalsalesservice.net

🌐 analyticalsalesservice.net

📍 412 N. Memorial Hwy
Nederland, TX 77627

Pump Up Can Assemblies



ANALYTICAL SALES
AND SERVICE



FOR INCREASED PRODUCTION PERFORMANCE AND CONTROL.

NEW CONSTRUCTION

Fill instrument wet legs, pressure, or flow impulse lines with the right fluids during start-up and commissioning.

MAINTENANCE

Unplug or fill instrument taps and root valves on flow, level, or pressure transmitters with oil, glycol or other fluids.

TROUBLESHOOTING

Identify and clear voids, blockages, leakage and freezing issues before they become an operational problem.

Why Do You Need Our Can Assemblies?

It's really simple. To speed up and lower the cost of startup and commissioning activities, turnaround projects, and to empower refinery and chemical plant instrument and decontamination teams.

Analytical Sales and Service creates each Can Assembly to your exact specifications to ensure you get the job done, to protect expensive equipment and to maintain operator and operational safety.

The Benefits of Our Can Assemblies!

- Unplug bleeders days before shutdown/turnarounds.
- Instrument personnel can fill wet legs and blow in and clear plugged lead lines on Differential Pressure Transmitters.
- Change barrier mediums to match your processes.
- Unplug plugged bleeders and taps "on the run."
- Lower labor cost and time associated with traditional steam hose applications.

PRODUCT CONFIGURATIONS:

Pump Can, Variation (NED-15050A) | Pump Can, Instrument, w/o Stingers (NED-15050A1) | Pump Can, Decontamination (NED-15050A2)



ANALYTICAL SALES
AND SERVICE

Explore Now! 409-724-2303

✉ sales@analyticalsaleservice.net

🌐 analyticalsaleservice.net

📍 412 N. Memorial Hwy
Nederland, TX 77627

Pump Up Can Assemblies



FOR INCREASED PRODUCTION PERFORMANCE AND CONTROL.

NEW CONSTRUCTION

Fill instrument wet legs, pressure, or flow impulse lines with the right fluids during start-up and commissioning.

MAINTENANCE

Unplug or fill instrument taps and root valves on flow, level, or pressure transmitters with oil, glycol or other fluids.

TROUBLESHOOTING

Identify and clear voids, blockages, leakage and freezing issues before they become an operational problem.

Why Do You Need Our Can Assemblies?

It's really simple. To speed up and lower the cost of startup and commissioning activities, turnaround projects, and to empower refinery and chemical plant instrument and decontamination teams.

Analytical Sales and Services creates each Can Assembly to your exact specifications to ensure you get the job done, to protect expensive equipment and to maintain operator and operational safety.

The Benefits of Our Can Assemblies!

- Unplug bleeders days before shutdown/turnarounds.
- Instrument personnel can fill wet legs and blow in and clear plugged lead lines on Differential Pressure Transmitters.
- Change barrier mediums to match your processes.
- Unplug plugged bleeders and taps "on the run."
- Lower labor cost and time associated with traditional steam hose applications.

PRODUCT CONFIGURATIONS:

Pump Can, Variation (NED-15050A) | Pump Can, Instrument, w/o Stingers (NED-15050A1) | Pump Can, Decontamination (NED-15050A2)

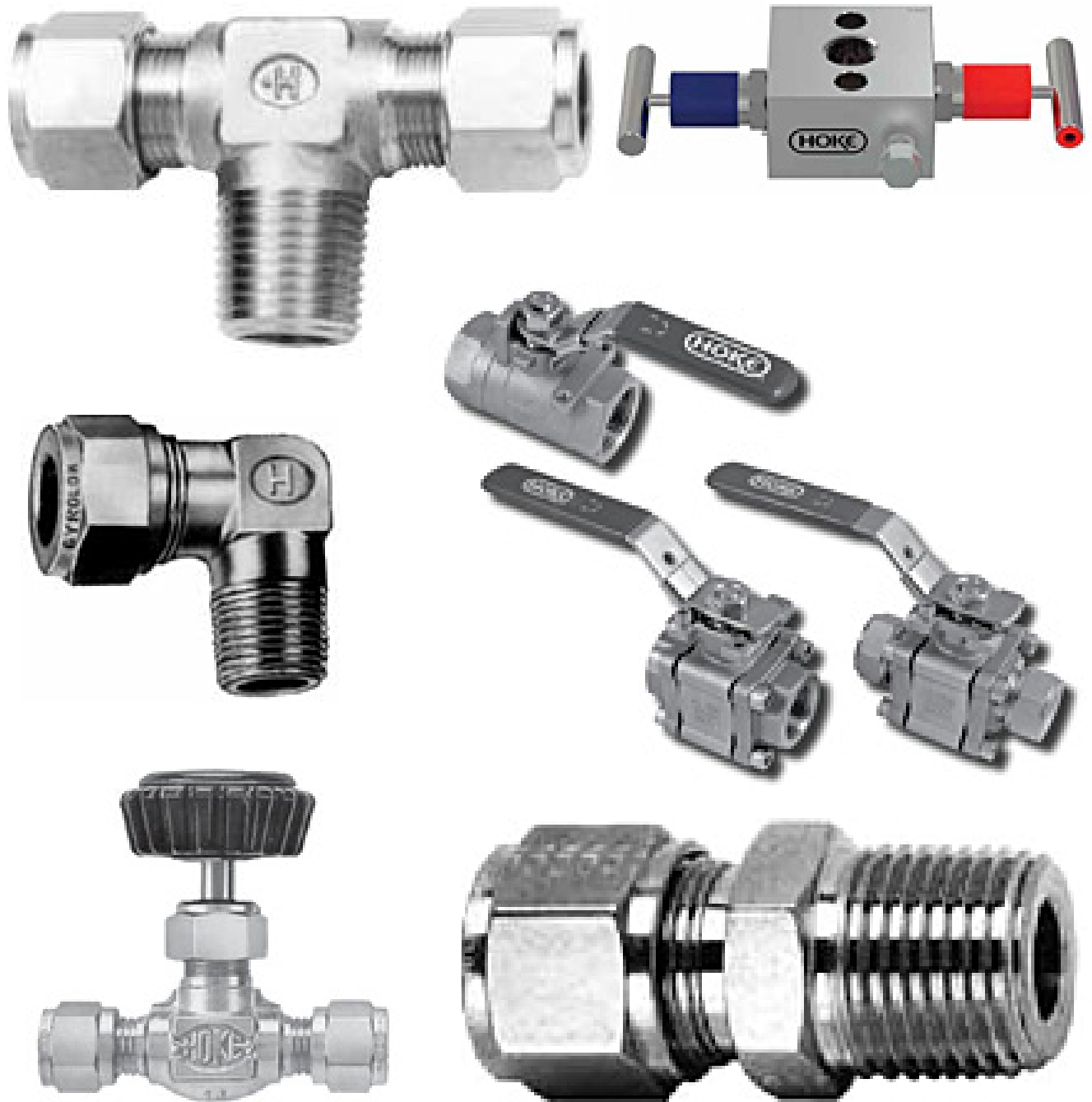


Explore Now! 409-724-2303

✉ sales@analyticalsalesservice.net
🌐 analyticalsalesservice.net

📍 412 N. Memorial Hwy
Nederland, TX 77627

Fittings and Valves



**ANALYTICAL SALES
AND SERVICE**

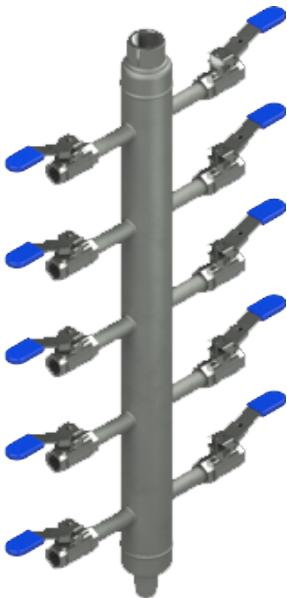
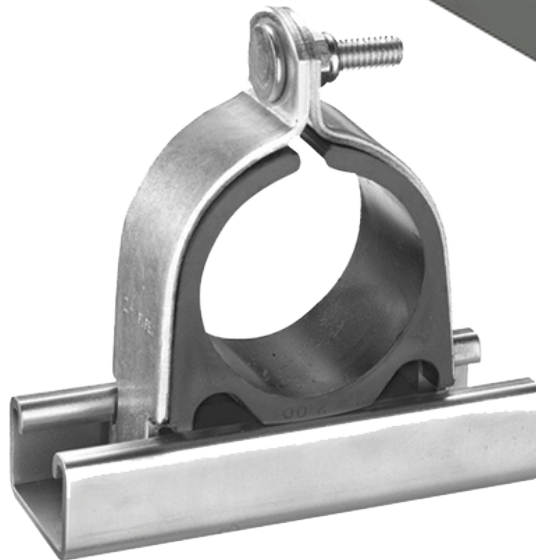
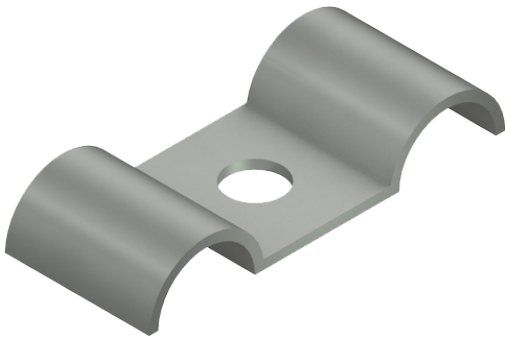
Explore Now! 409-724-2303

✉ sales@analyticalsalesservice.net

🌐 analyticalsalesservice.net

📍 412 N. Memorial Hwy
Nederland, TX 77627

Techline Components



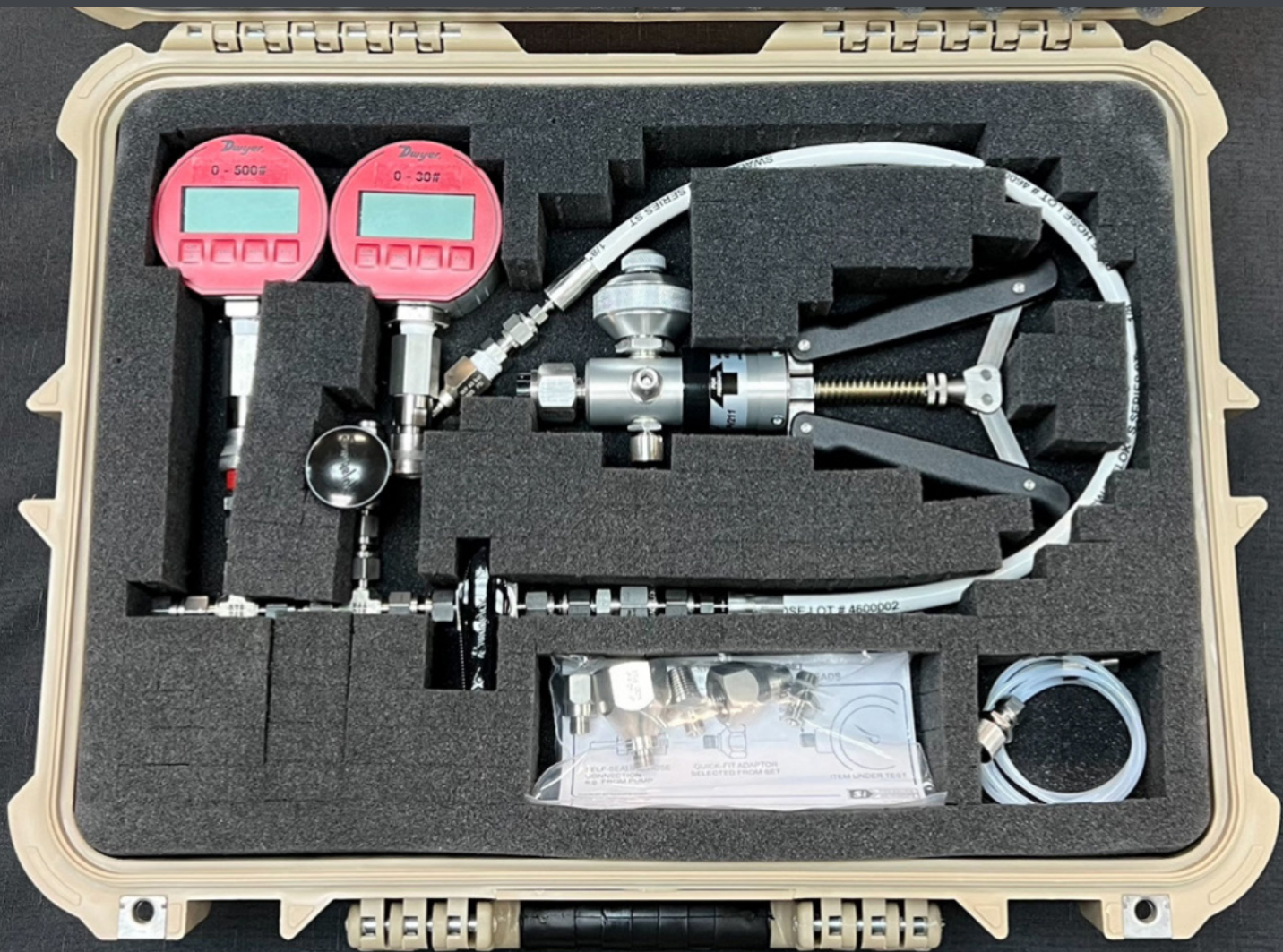
**ANALYTICAL SALES
AND SERVICE**

Explore Now! 409-724-2303

✉ sales@analyticalsalesservice.net
🌐 analyticalsalesservice.net

📍 412 N. Memorial Hwy
Nederland, TX 77627

Hand Pump Test Tree Assemblies



**ANALYTICAL SALES
AND SERVICE**

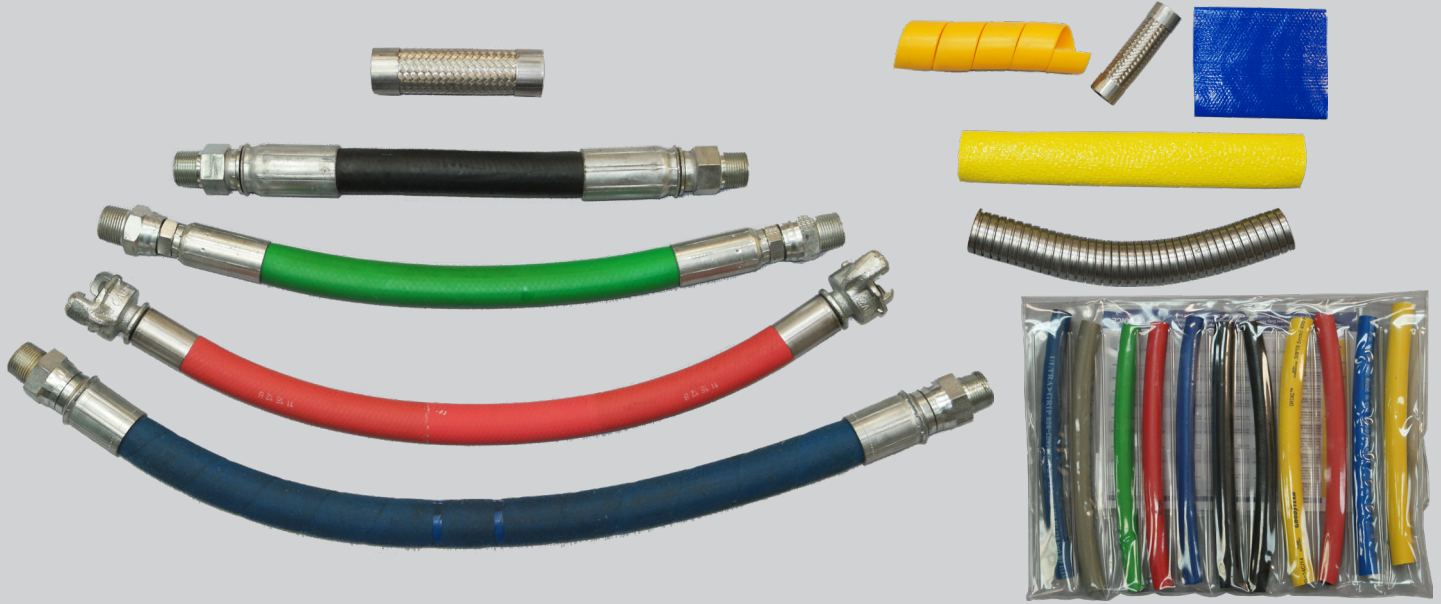
Explore Now! 409-724-2303

✉ sales@analyticalsalesservice.net

🌐 analyticalsalesservice.net

📍 412 N. Memorial Hwy
Nederland, TX 77627

Hose Experts



ALL METAL, POLYCORE, SINGLE/DOUBLE-BRAIDED AND RUBBER HOSES

Each designed to improve operational performance and lower cost.

CONTAINMENT

Dependable hose and flexible tubing options for safely containing industrial or facility-based gas, vapor, or liquid.

SAFETY

Proven solutions to eliminate costly failures and dangerous leaks that can result in harm to people or facilities.

MEDIA HANDLING

Secure handling of all types of gasses, vapors, or liquids to increase production capability and product quality.

What Are Your Application Needs?

To enhance operational performance, increase safety and controls while lowering production cost.

Analytical Sales and Service delivers high-quality, cost-effective, expertise on system compatible hoses.

We eliminate harmful environmental and safety-related issues. Give us a try, you won't be disappointed.

Why You Need Our Hoses and Tubing!

- Local, on staff hose experts
- Local design, manufacturing, testing, and visual assessment
- Custom hose options to meet every specification
- Manufacturing date and full tagging/labeling for every product
- Hose test reports insure capability and increased confidence
- Rigorous attention to correct application, planes, radius, visual assessment, and maintenance inspection for the best performance

APPLICATIONS

- Dynamic and Static
- Gas permeation
- Steam, natural gas, oxygen, and nitrogen
- All types of temperatures and pressures
- Harsh and high-vibration environments
- Eliminate entrapment

FEATURES

- Protection: sleeves, outer covers, guards, fire jackets, and thermal shields
- Carbon black filled/impregnated options
- Convoluted for drain ability
- Backed by local hose advisors with a combined 100 years of application knowledge and experience
- Custom length hoses for every application/need
- Oxygen cleaned

SPECIFICATIONS

- Hose sizes from 1/16" to 20"
- Single/Double-braided reinforced options
- Metal core, poly, nylon, PTFE core, rubber core options for standard or specific uses
- Stainless Braided 304, 316, 316L, and Monel reinforcement
- A great number of connections and options available to suit your needs



ANALYTICAL SALES
AND SERVICE

Explore Now! 409-724-2303

✉ sales@analyticalsalesservice.net

🌐 analyticalsalesservice.net

📍 412 N. Memorial Hwy
Nederland, TX 77627

Rod Out Tools



Flex Shaft



135° Shaft



90° Shaft



Straight Shaft



Everlast Bit



Twist Bit



**ANALYTICAL SALES
AND SERVICE**

Explore Now! 409-724-2303

✉ sales@analyticalsaleservice.net

🌐 analyticalsaleservice.net

📍 412 N. Memorial Hwy
Nederland, TX 77627

Air Dryer Kits



ANALYTICAL SALES
AND SERVICE

Explore Now! 409-724-2303

✉ sales@analyticalsalesservice.net

🌐 analyticalsalesservice.net

📍 412 N. Memorial Hwy
Nederland, TX 77627

Steam Trap Assemblies

SPIRAX-Sarco, TLV, and Yarway



ANALYTICAL SALES
AND SERVICE

Explore Now! 409-724-2303

✉ sales@analyticalsalesservice.net

🌐 analyticalsalesservice.net

📍 412 N. Memorial Hwy
Nederland, TX 77627

Gauge Valve Assemblies



PRECISION ISOLATION & PROTECTION

ISOLATION

Keep expensive instrumentation isolated from during process shut downs or during routine maintenance.

PROTECTION

Separate process and differential pressures and avoid one-sided overpressure during commissioning.

SAFETY

Blow-out proof valve designs improve working safety to people and equipment, even where high pressure loading is present.

Why Our Valve Assemblies?

You operate in an environment of variable pressures, different gas and liquid materials, and the need to keep everything producing at all times.

We enable your operating environment to protect and isolate gauges from damage due to pressure fluctuations, hydraulic shock, or pressure surges so you always have accurate pressure readings.

Ensuring Best Performance

- Local inventory, parts, design, manufacture, and testing
- Fast assembly, testing, and installation available
- Single, double, triple, and multi-port options available
- Compatible with many process media types
- Able to meet many pressure and temperature needs

CHARACTERISTICS

- Constant flow rate under pressure conditions
- Durable, long-lasting, high-quality construction
- Numerous valve, port, and gauge configurations
- Reliable throttle, regulation, or isolation
- Multi-function isolation options
- Keep production going during maintenance

FEATURES

- Single bleed ports to block and bleed valves
- Multi-port connections for different gauge or equipment needs
- Multiple gauge options for varied pressure needs
- Numerous material options for various media environments
- Fully configured and tested prior to installation

SPECIFICATIONS

- Stainless Steel construction
- Non-rotating ball-tip and plug-tip stem designs
- 1/2" to 1/2" NPT connections (male/female)
- Standard 1/2" female gauge ports
- Schedule 16D pipe wall or heavier on inlet
- 0-2000psig pressure capability
- Meets ASME B40.100 safety standard



**ANALYTICAL SALES
AND SERVICE**

Explore Now! 409-724-2303

✉ sales@analyticalsalesservice.net
🌐 analyticalsalesservice.net

📍 412 N. Memorial Hwy
Nederland, TX 77627

General Purpose Valves



ANALYTICAL SALES
AND SERVICE

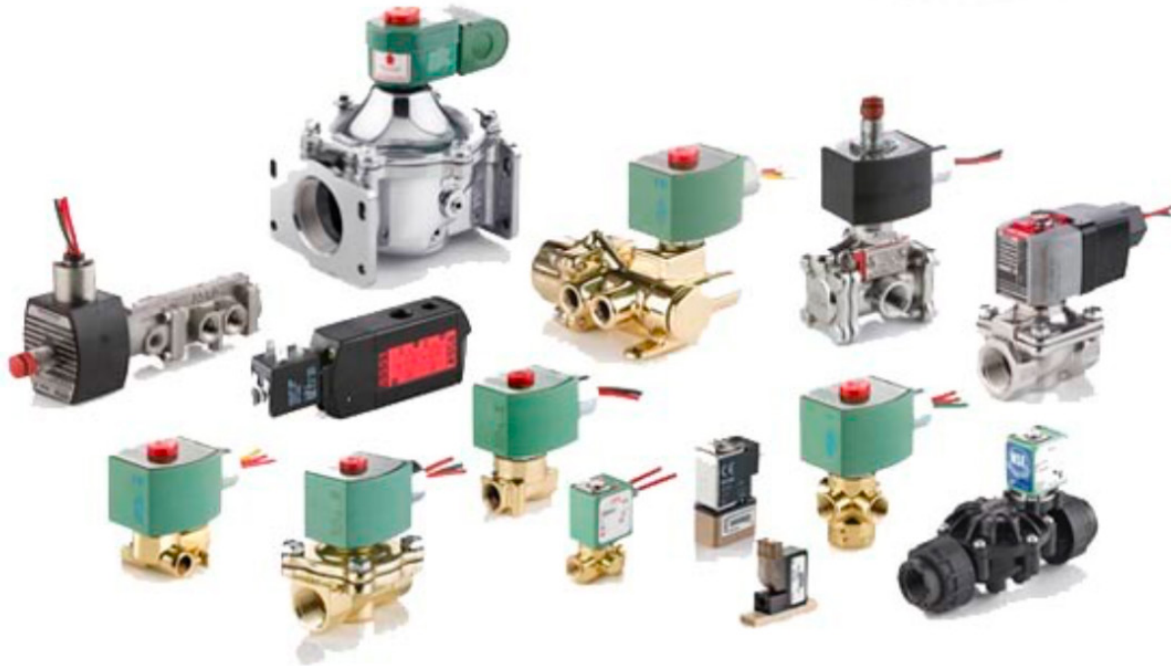
Explore Now! 409-724-2303

✉ sales@analyticalsaleservice.net

🌐 analyticalsaleservice.net

📍 412 N. Memorial Hwy
Nederland, TX 77627

ASCO Solenoid Valves



**ANALYTICAL SALES
AND SERVICE**

Explore Now! 409-724-2303

✉ sales@analyticalsaleservice.net

🌐 analyticalsaleservice.net

📍 412 N. Memorial Hwy
Nederland, TX 77627

Task-specific Pelican Cases



**ANALYTICAL SALES
AND SERVICE**

Explore Now! 409-724-2303

✉ sales@analyticalsalesservice.net

🌐 analyticalsalesservice.net

📍 412 N. Memorial Hwy
Nederland, TX 77627

Thread Identification Kits



**ANALYTICAL SALES
AND SERVICE**

Explore Now! 409-724-2303

✉ sales@analyticalsaleservice.net

🌐 analyticalsaleservice.net

📍 412 N. Memorial Hwy
Nederland, TX 77627

Stainless/Specialty Tubing



HIGH QUALITY, HIGH PERFORMANCE TUBING PRODUCTS.

BROAD APPLICATION

Tubing solutions for oil and gas, petro-chemical, power generation, high purity, marine and renewable energy.

BEST IN CLASS SERVICE

We're a top-tier supplier focused on meeting your objectives with great customer service every step of the way.

CUSTOM OPTIONS

Tubing Material Testing Reports (MTRs) available. Domestic and import material options for every budget.

Tubing Products for Just About Every Need!

Specialty Alloy Options

- Alloy 20 Tubing
- Alloy 2507 Super Duplex Tubing
- Alloy 254 SMO (6-moly) Tubing
- Alloy C276 Tubing
- Alloy 400 Tubing
- Alloy 600 Tubing
- Alloy 625 Tubing
- Alloy 825 Tubing
- Alloy 904L Tubing

Stainless Steel Options

- 304/304L Tubing
- 316/316L Tubing
- 317L Tubing
- Seamless Metric Tubing
- Coiled Stainless Tubing
- Oxygen Cleaned & Capped Tubing
- Electropolished (EP) Tubing
- SilcoNert 2000 Coated Tubing
- High-Pressure Fluid System

Standard Seamless

Imperial (in) and Metric (mm) Sizes
Medium, High, and Ultra-High Pressure

Grade	OD	Wall
304/304L	.125-5.00"	.010-.375"
316/316L	.063-4.00"	.010-.375"
317L	.125-1.00"	.028-.134"

Supported Industry Standards: ISO Certified Mill Sources, ASTM/ASME, CGA, NORSOK, NACE, and DFAR



**ANALYTICAL SALES
AND SERVICE**

Explore Now! 409-724-2303

✉ sales@analyticalsaleservice.net
🌐 analyticalsaleservice.net

📍 412 N. Memorial Hwy
Nederland, TX 77627

Thermowells & Heat Sinks



ANALYTICAL SALES
AND SERVICE

Explore Now! 409-724-2303

✉ sales@analyticalsalesservice.net

🌐 analyticalsalesservice.net

📍 412 N. Memorial Hwy
Nederland, TX 77627

Ladders



Extension Ladder



Mobile Ladder



Combo Ladder



Step Ladder



Articulating Ladder



ANALYTICAL SALES AND SERVICE

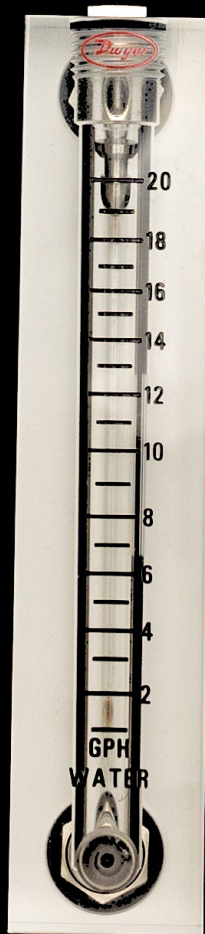
Explore Now! 409-724-2303

✉ sales@analyticalsalesservice.net

🌐 analyticalsalesservice.net

📍 412 N. Memorial Hwy
Nederland, TX 77627

Flow Meters



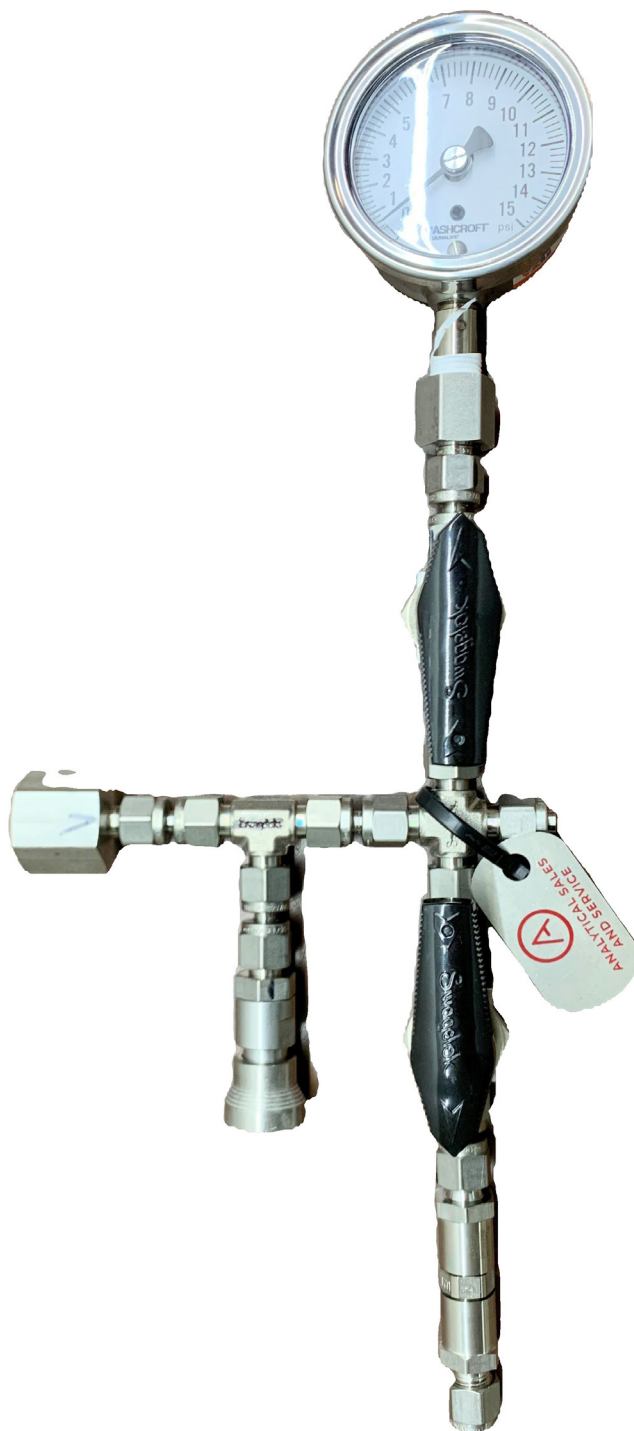
ANALYTICAL SALES
AND SERVICE

Explore Now! 409-724-2303

✉ sales@analyticalsalesservice.net
🌐 analyticalsalesservice.net

📍 412 N. Memorial Hwy
Nederland, TX 77627

Catalyst Bin Nitrogen Assemblies



ANALYTICAL SALES
AND SERVICE

Explore Now! 409-724-2303

✉ sales@analyticalsalesservice.net

🌐 analyticalsalesservice.net

📍 412 N. Memorial Hwy
Nederland, TX 77627

GO Regulator Continuous Supply Switching Systems



GO COM-2P



GO COM-2B

ENSURING CONTINUOUS AND PREDICTABLE GAS SUPPLY

HIGH-QUALITY

Every switching changeover regulator system is constructed of high-quality materials and suitable for each specific application.

HIGH-PERFORMANCE

Every regulator product has been field tested and proven for effectiveness, safety, environmental, and reliable performance.

SEAMLESS SUPPORT

Our precision products, selection, and ongoing support expertise keep your operations performing at their best.

Highly Sensitive Pressure Regulators for Just About Every Need!

GO COM-2P Crossover

- Two single-stage regulators
- Single easy-to-mount body
- Primary/secondary regulators with common outlet port
- Allows non-stop gas delivery and eliminates analyzer upsets
- +/-0.01% pressure variance
- Inlet pressures to 6000 psig
- Outlet pressures 0-250 psig
- Crossover pressures 10-250 psig
- 1/4" FNPT connections and reducers
- Stainless steel, brass, MONEL, and INCONEL diaphragm options
- Seat materials

GO COM-2B Changeover

- Smaller compact design
- Two single-stage regulators
- Single line regulator for supply
- Ensures no pressure change during source depletion
- Easy manual adjustment as needed
- For cylinder change during operation
- Stainless steel, brass, and MONEL
- +/-0.01% pressure accuracy
- Changeover pressures 10-250 psig
- Cv coefficients: 0.025, 0.06, 0.2, 0.5
- 20 micron inlet filters
- PTFE-lined INCONEL diaphragm
- Seat materials
- Inlet pressures to 6000psi

Ensuring Performance

- Local inventory and immediate swap
- Maximize reliability in all applications
- Supporting up to 6-pack of bottles
- Modular designs for multiple panel configurations
- Tailored to desired supply flow rate, system compatibility, and all requirements
- Maximize gas usage and minimize single cylinder or 6-pack bottles
- Cost-effective options for just about every budget
- Local, on-site support always available



**ANALYTICAL SALES
AND SERVICE**

Explore Now! 409-724-2303

✉ sales@analyticalsalesservice.net

🌐 analyticalsalesservice.net

📍 412 N. Memorial Hwy
Nederland, TX 77627

Go Regulator Assemblies



ANALYTICAL SALES
AND SERVICE

Explore Now! 409-724-2303

✉ sales@analyticalsalesservice.net
🌐 analyticalsalesservice.net

📍 412 N. Memorial Hwy
Nederland, TX 77627

Transmitter Gasket Kits



ANALYTICAL SALES
AND SERVICE

Explore Now! 409-724-2303

✉ sales@analyticalsalesservice.net
🌐 analyticalsalesservice.net

📍 412 N. Memorial Hwy
Nederland, TX 77627

High Pressure Fitting Kits



40K and 60K PSI Options



ANALYTICAL SALES
AND SERVICE

Explore Now! 409-724-2303

✉ sales@analyticalsaleservice.net

🌐 analyticalsaleservice.net

📍 412 N. Memorial Hwy
Nederland, TX 77627

Adapt-a-Kits



**ANALYTICAL SALES
AND SERVICE**

Explore Now! 409-724-2303

✉ sales@analyticalsaleservice.net

🌐 analyticalsaleservice.net

📍 412 N. Memorial Hwy
Nederland, TX 77627

Steam Wand/Lance Assemblies



ASSURING PRODUCTION, NO MATTER WHAT!

COLD TEMPERATURES

Reduce or eliminate system media restrictions and blockages. It can also be used to remove ice from work areas, platforms, and sidewalks.

BLOCKAGES

Quickly and effectively heat process piping or blockages in equipment to keep media flowing and production on schedule.

SAFETY

Unique designs keep high-temperature components insulated and away from workers to reduce or eliminate the chance of personnel burns.

Why Do You Need Our Steam Wand/Lance Assemblies?

In summary, it is to keep production going in all temperature conditions by reducing or eliminating unnecessary media thickening or blockages.

Every Steam Wand/Lance represents the greatest operator safety, application speed and accuracy, and flexible design options. You have what you need to quickly and safely restore or maintain production.

And, because we're local, you solve cold weather problems fast!

Why You Need the Safest Steam Wands/Lances on the Market!

- Local fabrication means fast delivery and turnaround
- Every Steam Wand/Lance meets or exceeds the ASTM CO 1055 standard (150psi @ 366°F)
- Off-the-shelf, or made to your exact requirement, so you have exactly what you need for your application
- Shorter wands/lances for easy maneuverability, quick placement, and accurate application of steam where you need it most
- Industry-leading Milwaukee ball valves deliver superior safety, efficiency, and cost-effectiveness

APPLICATIONS

- Immediately supply heat to mission-critical equipment in cold weather conditions
- Proactively and accurately apply high-temperature steam in your exact application to keep media flowing without interruption
- Periodic or instant process equipment cleaning

FEATURES

- Standard 32" wand length, or flexible wand lengths and configurations made to your specification
- Simple, trouble-free product designs
- Innovative and reusable insulation blankets/sleeves (instead of non-complying heat tracing)
- Insulated handles, minimal hot metal exposure
- Milwaukee ball valves
- Local fabrication and fast delivery to your location
- Local replacement parts inventory

BENEFITS

- Quick heat application, exactly where you need it
- Better worker safety when using wands/lances
- Fewer repairs due to design and durability
- Fast component changes when damage happens
- Keep media flowing without interruption
- Lower maintenance and repair costs
- Increase production predictability no matter the weather conditions



ANALYTICAL SALES
AND SERVICE

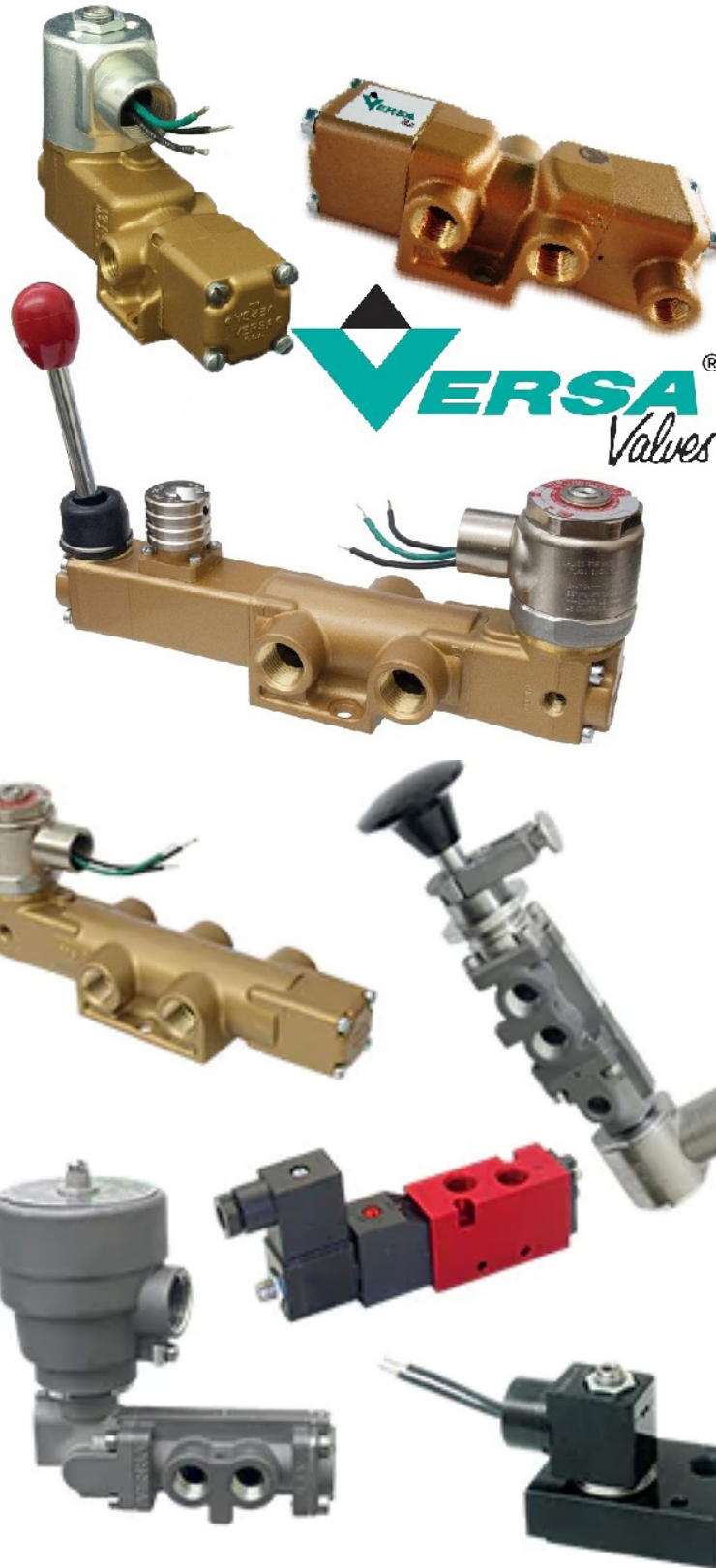
Explore Now! 409-724-2303

✉ sales@analyticalsalesservice.net

🌐 analyticalsalesservice.net

📍 412 N. Memorial Hwy
Nederland, TX 77627

Versa Valves



**ANALYTICAL SALES
AND SERVICE**

Explore Now! 409-724-2303

✉ sales@analyticalsalesservice.net

🌐 analyticalsalesservice.net

📍 412 N. Memorial Hwy
Nederland, TX 77627

RTD Insertion Kits



ANALYTICAL SALES
AND SERVICE

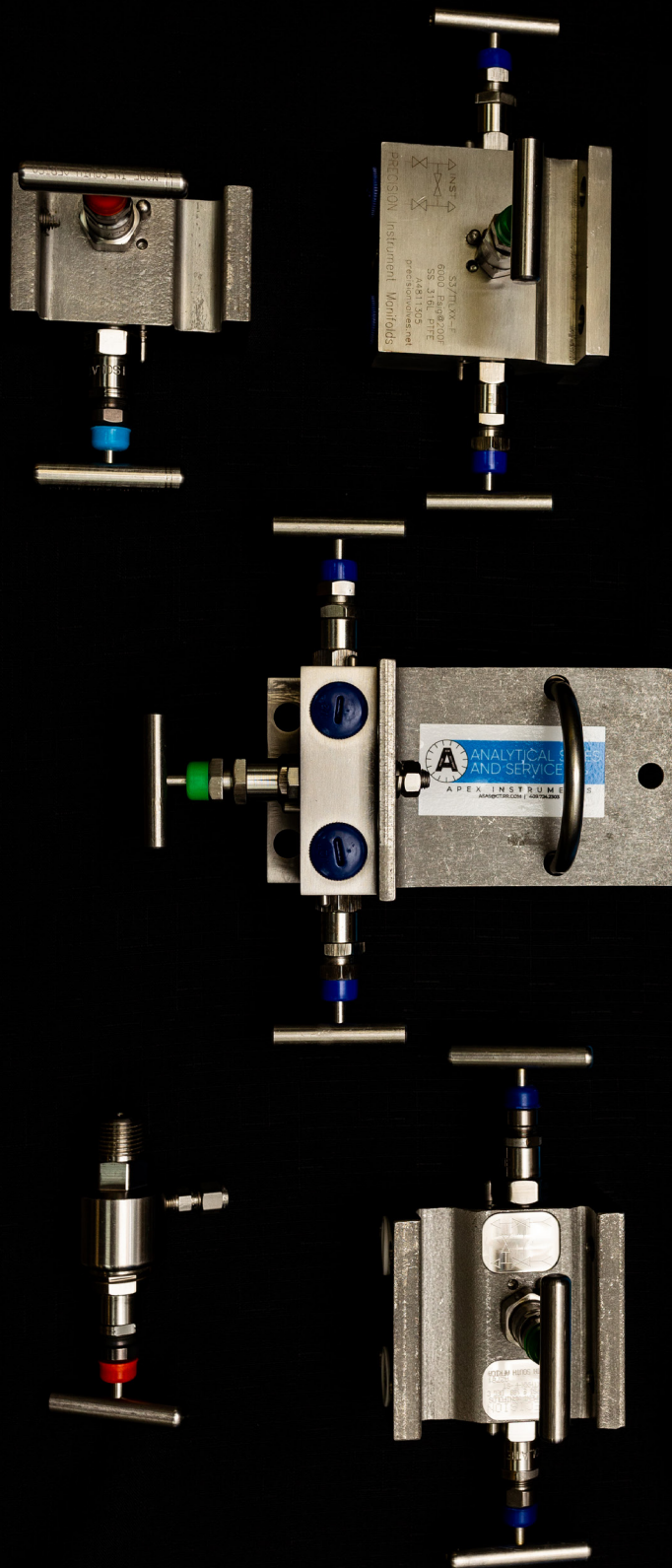
Explore Now! 409-724-2303

✉ sales@analyticalsalesservice.net

🌐 analyticalsalesservice.net

📍 412 N. Memorial Hwy
Nederland, TX 77627

Manifolds



ANALYTICAL SALES
AND SERVICE

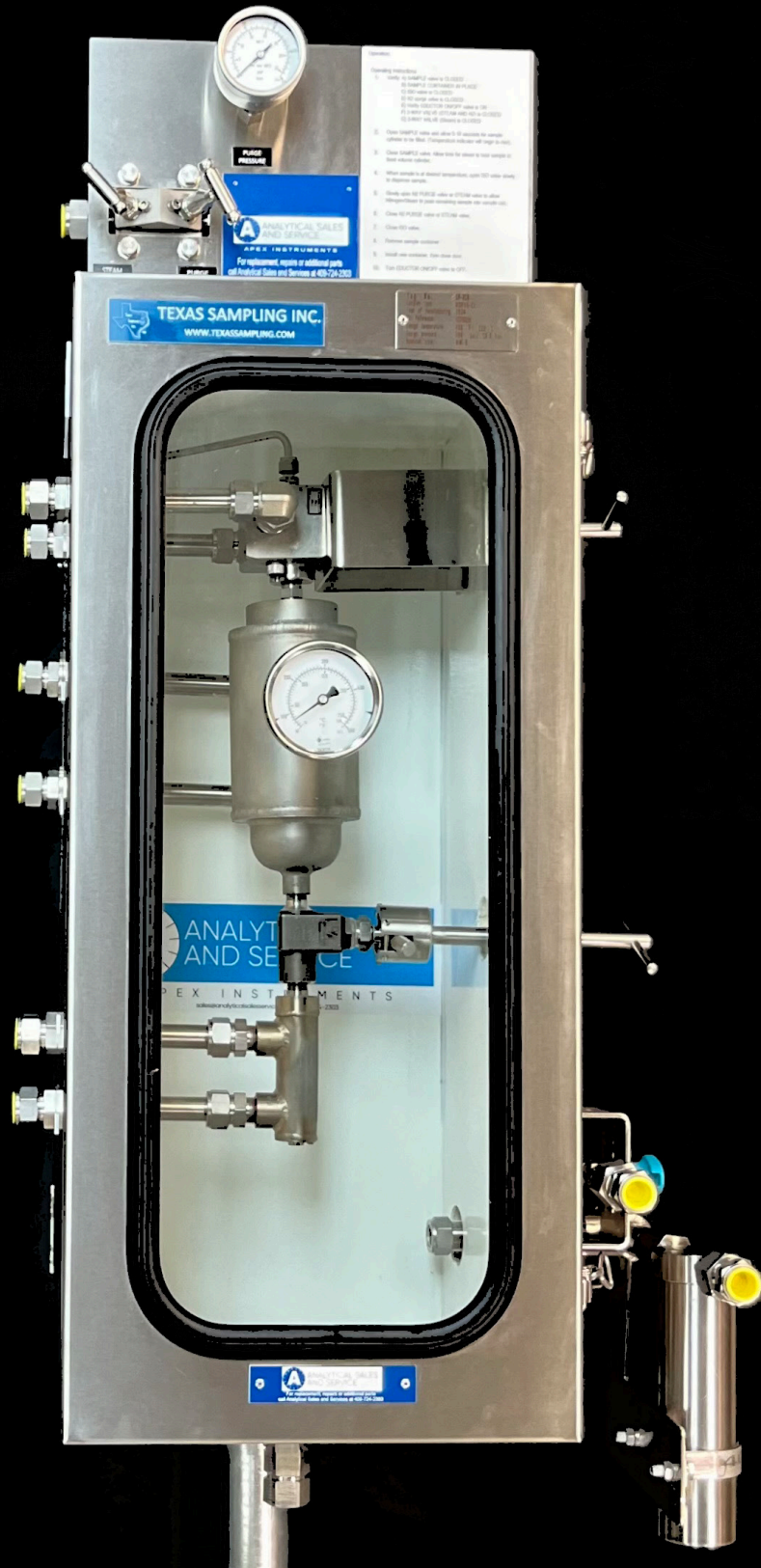
Explore Now! 409-724-2303

✉ sales@analyticalsalesservice.net

🌐 analyticalsalesservice.net

📍 412 N. Memorial Hwy
Nederland, TX 77627

Texas Sampling & Dopak Sampling



ANALYTICAL SALES
AND SERVICE

Explore Now! 409-724-2303

✉ sales@analyticalsalesservice.net

🌐 analyticalsalesservice.net

📍 412 N. Memorial Hwy
Nederland, TX 77627

Sample Cylinder Assemblies



FOR LIQUID AND GAS QUALITY CONTROL.

EXTRACTION

Safe and effective options for extracting field or facility-based liquids or gasses for storage, transportation, or analysis.

CONTAINMENT

Proven solutions to ensure secure capture and storage of liquids and gasses for transportation or analysis.

TRANSPORTATION

Have safe, secure handling and shipment of sampling liquids, or gasses that protect the people and the environment.

Why Do You Need Our Sample Cylinder Assemblies?

In a nutshell to increase the safety, speed, effectiveness, and quality of your production environment.

Our great selection of sample cylinders meet or exceed industry standards for handling of pressurized liquids and gasses that protect people and the environment.

Analytical Sales and Service is your single-source for high-quality and cost-effective liquid and gas quality control.

Why You Need to Get Your Sample Cylinders from Us!

- Local inventory, parts, design, manufacture, and testing (incl. DOT)
- Fast, thorough periodic maintenance and documentation processes
- Our Sample Cylinder Cleaning Stations ensure constant accuracy
- Eliminate sample cylinder failure with our testing services
- We make and deliver every cylinder to your exact specifications and requirements, every time

CHARACTERISTICS

- Internal neck formed for easy cleaning
- Heavy wall neck to prevent splitting/flaring
- Combination Valves
- Stock 300 & 500 Stainless
- Alta Robbins valves protect from over torquing
- Personnel and environmental safety with our custom PELICAN transportation case options

FEATURES

- Body made of seamless Stainless or Monel 400
- Aircraft quality NPT threads
- Sizes from 40cc to one-gallon internal volume
- Any sampling valve brand of your choice
- Outage tubes cut to your exact specification

SPECIFICATIONS

- Built to DOT-3E requirements 49 CFR Part 178
- DOT-3E cylinders test to 5/3x working pressures
- Continuous burst testing every 500cc cylinders
- 1000cc cylinders manufactured under SP-16195
- Rupture disk from 1900-2850psi or PRV options
- Sulfur inert coatings of your choice



ANALYTICAL SALES
AND SERVICE

Explore Now! 409-724-2303

✉ sales@analyticalsalesservice.net

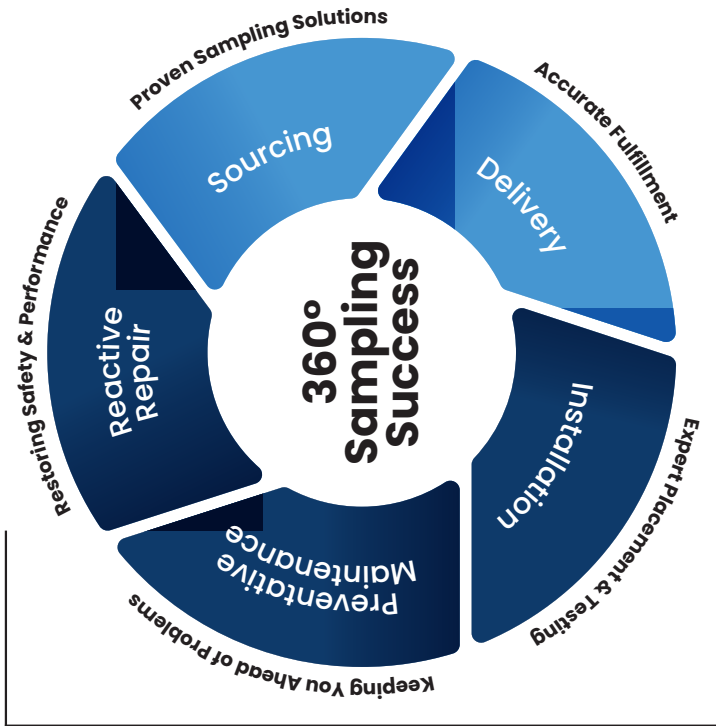
🌐 analyticalsalesservice.net

📍 412 N. Memorial Hwy
Nederland, TX 77627

Services



Peace of Mind, End-to-End Comprehensive Customer Support from Requirements, Application Walkthrough, Design, and Engineering Fully Supported by Crane.



On-Site Services, Expertise, Skills, Knowledge, Methods and Processes that Enable Operational Safety, Predictable Production Control, and Environmental Compliance.

Purge Panel Assemblies



ANALYTICAL SALES AND SERVICE

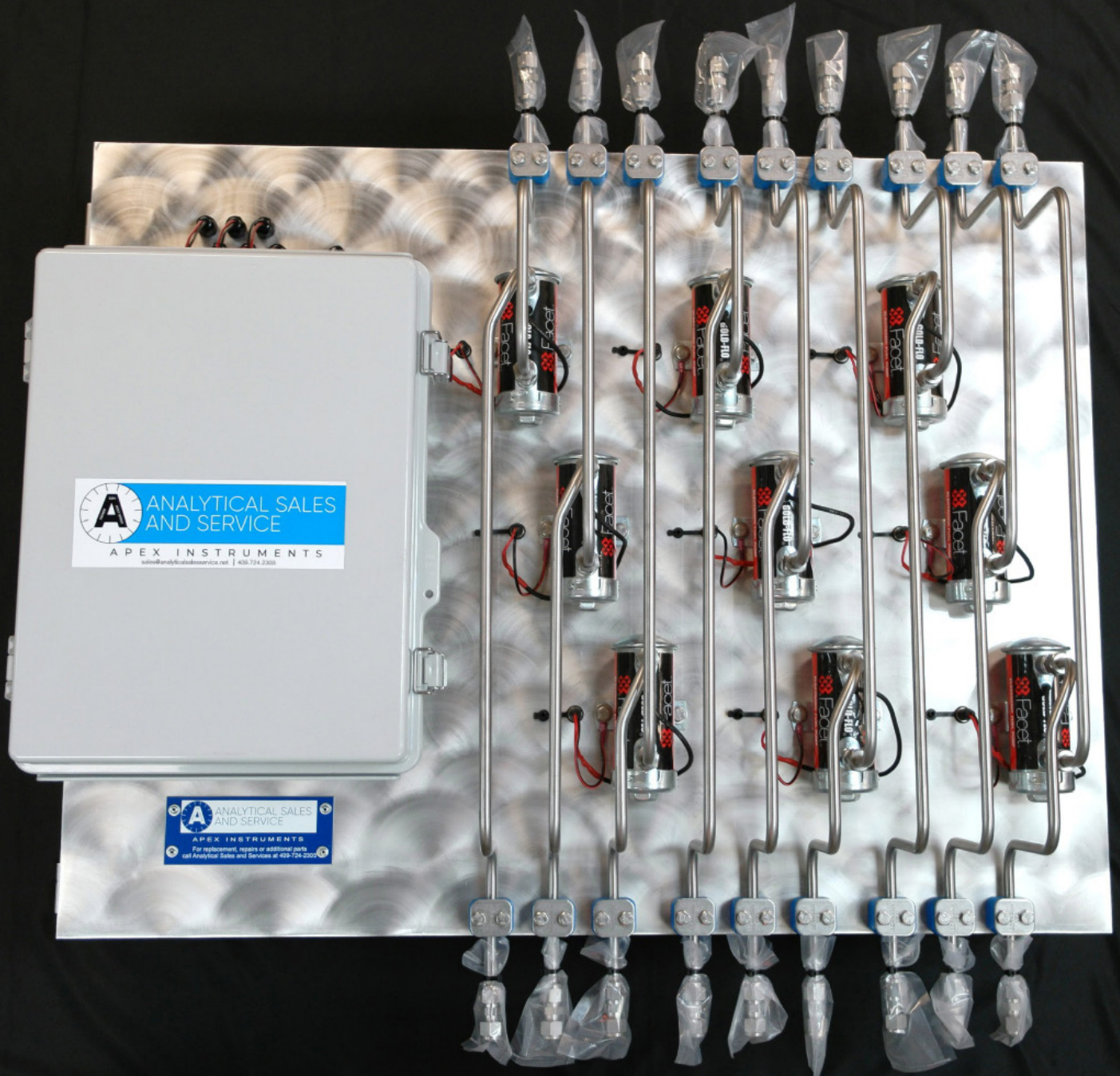
Explore Now! 409-724-2303

✉ sales@analyticalsaleservice.net

🌐 analyticalsaleservice.net

📍 412 N. Memorial Hwy
Nederland, TX 77627

Custom Panels



Explore Now! 409-724-2303

✉ sales@analyticalsaleservice.net
🌐 analyticalsaleservice.net

📍 412 N. Memorial Hwy
Nederland, TX 77627

Lockout/Tagout Kits



ANALYTICAL SALES
AND SERVICE

Explore Now! 409-724-2303

✉ sales@analyticalsalesservice.net

🌐 analyticalsalesservice.net

📍 412 N. Memorial Hwy
Nederland, TX 77627

Midget Fuse Kits



ANALYTICAL SALES
AND SERVICE

Explore Now! 409-724-2303

✉ sales@analyticalsalesservice.net

🌐 analyticalsalesservice.net

📍 412 N. Memorial Hwy
Nederland, TX 77627

Glass Fuse Kits



ANALYTICAL SALES
AND SERVICE

Explore Now! 409-724-2303

✉ sales@analyticalsaleservice.net

🌐 analyticalsaleservice.net

📍 412 N. Memorial Hwy
Nederland, TX 77627

Backflow Meter Kits



ANALYTICAL SALES
AND SERVICE

Explore Now! 409-724-2303

✉ sales@analyticalsalesservice.net

🌐 analyticalsalesservice.net

📍 412 N. Memorial Hwy
Nederland, TX 77627



ANALYTICAL SALES AND SERVICE



Buffer Pack Solutions

Our buffer solutions allow you to adjust your testing system to precisely measure your samples' unknown pH. You can feel more confident about accuracy with a choice from our selection of high-accuracy pH buffers, reference fill solutions, solution packs, and pH value buffers

Precise Calibrations

Buffer solutions help you calibrate pH instruments to ensure accuracy.



Verified & Reliable

Each batch is verified at an independent laboratory to ensure buffer solution accuracy.



Traceable to NIST Standard

All solutions are traceable to NIST standard reference materials.



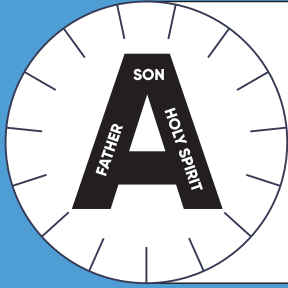
Bundle and Save More

Convenient buying options to meet your specific needs and budget.



Call to place your order!
(409)724-2303

Analytical Sales & Service
412 N. Memorial Hwy.
Nederland, TX. 77627
Sales@analyticalsaleservice.net



ANALYTICAL SALES AND SERVICE



Please call us for
all of your product
and equipment
needs and I'll be
sure to make it
happen.

Chris LeMoine

CEO & President
Analytical Sales & Service



ANALYTICAL SALES
AND SERVICE

Call Now for Quote: 409-724-2303

✉ sales@analyticalsalesservice.net
🌐 analyticalsalesservice.net

📍 412 N. Memorial Hwy
Nederland, TX 77627